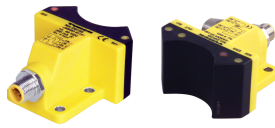
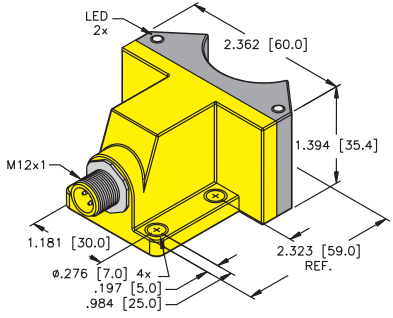
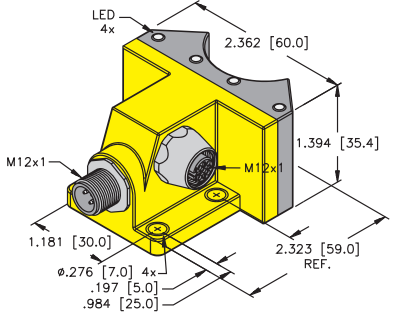


# TURCK Valve Sensors



Housing Style	Part Number	ID Number	Features	Sensing Range (mm)	Output
<b>35 mm - Nonembeddable, Dual Valve Sensor, eurofast® Connector</b>  	Ni 4-DSU35-2AN4X2-H1141	M1569920	Short-Circuit Protection	4	Dual NPN
	Ni 4-DSU35-2AP4X2-H1141	M1569901	Short-Circuit Protection	4	Dual PNP
	Ni 4-DSU35-2Y1X2-H1140	M1051003	Short-Circuit Protection up to 15 VDC	4	Dual NAMUR
<b>35 mm - Nonembeddable, Dual Valve Sensor, eurofast Connector</b>  	NI 4-DSU35-2ASIX4-H1140	M1902000	Short-Circuit Protection	4	Dual ASI-BUS

Target Pucks on pages E19-E23.



Most Ni 4-DSU35... dual valve sensors are FM approved for installation in Class I, Division 2 hazardous locations. See **TURCK** control drawing Ni-1.002 ([www.turck.com/fmcd](http://www.turck.com/fmcd)) for specific models and installation requirements. Ni 4-DSU35-2Y1X2-... dual valve sensors are FM approved as intrinsically safe for installation in Class I, II or III, Division 1 hazardous locations per **TURCK** control drawing IS-1.000 ([www.turck.com/fmcd](http://www.turck.com/fmcd)).

# Valve Sensors

Voltage	Switching Freq. (Hz)	Switching Current (mA) VAC/VDC	Operating Temp. (°C)	Protection	Housing	Face	Power LED	Output LED	Mating Cord, Cable Length/ Jacket	Wiring Diagram #	Wiring Diagrams
10-65 VDC	50	≤200	-25 to +70	IP67	PP	PP	No	YE/RD	RK 4.4T-*	1	<p><b>Diagram 1</b></p>
10-65 VDC	50	≤200	-25 to +70	IP67	PP	PP	No	YE/RD	RK 4.4T-*	2	<p><b>Diagram 2</b></p>
5-30 VDC	50	Remote	-25 to +70	IP67	PP	PP	No	YE/RD	RK 4.41T-*	3	<p><b>Diagram 3</b></p>
18-33 VDC	30	≤80	-25 to +70	IP67	PP	PP	No	YE/RD	RKC 254-*M RS 4.4T-*	4	<p><b>Diagram 4</b></p>

\* Length in meters.